

**Monart Destination Spa, The Still, Enniscorthy, Co. Wexford, Ireland**

Tel: +353 (0)53 92 38999 Email: [info@monart.ie](mailto:info@monart.ie)

[www.monart.ie](http://www.monart.ie)

We invite you to experience our pure luxurious accommodation combined with fresh sumptuous meals prepared by our world class chefs. Immerse your senses in our renowned thermal suite where you will enter a realm of deep relaxation, vital rejuvenation and leave feeling ready for a treatment at the hands of our friendly, highly trained therapists.

Fall in love with the Monart experience like Forbes Magazine who featured Monart as one of the top 10 destinations in the world, as with Conde Nast who included Monart in their coveted Hot List and like the Irish Spa Industry who awarded Monart Ireland's Best Destination Spa... for the third year in a row. Monart is located 5 minutes from Enniscorthy Golf Club.

**Millrace Hotel, Leisure Club & Spa, Bunclody, County Wexford, Ireland**

Tel: +353 (0)53 9375100 Email: [reservations@millracehotel.com](mailto:reservations@millracehotel.com)

[www.millracehotel.com](http://www.millracehotel.com)

The Millrace Hotel is located within 25 minutes from a wide range of Fantastic Golf Clubs in the South East. Bunclody Golf Club is located adjacent to the Hotel and is an ideal location for any golfer. You also have Coolattain, Enniscorthy and Carlow golf club to name a few. Guests at The Millrace Hotel, Leisure Club & Spa can enjoy luxury accommodation, Mill Bar Bistro and Leisure Club & Spa. Bunclody is located just seven miles from Enniscorthy, nestled in the foothills of Mount Leinster. The Millrace Hotel is the perfect destination for your Wexford hotel break, whether you are planning a weekend break, a midweek get away with the girls, a spa break, golf break or a family break. \*60 minutes drive from Rosslare and 80 minutes drive from Dublin  
\*Contemporary accommodation \*Mill Bar & Bistro \*Millrace Spa & Leisure Club with 18m pool \*40 minutes from Wexford Town \*Close to a plethora of activities.

**Riverside Park Hotel & Leisure Club, The Promenade, Enniscorthy, Ireland**

Tel: +353 (0)53 92 37800 Email: [info@riversideparkhotel.com](mailto:info@riversideparkhotel.com)

[www.riversideparkhotel.com](http://www.riversideparkhotel.com)

Our Enniscorthy Hotel offers luxury accommodation, excellent cuisine, a luxurious bar with spectacular views overlooking the River Slaney and state of the art leisure facilities. Unlike any other 4-star hotels within County Wexford, all of our rooms are designed to the highest standards with comfort and relaxation for each guest. The Hotel is an ideal location to base your-self on a golfing trip to the South East. County Wexford offers a truly unique Golf Break with the best weather in Ireland and its great selection of Ireland's finest golf courses. Choose between parklands and links golf courses all within an hour's drive. Our golf packages include Enniscorthy Golf Club, which is a beautiful tree lined 18 hole parkland golf course and only minutes drive from the Riverside Park Hotel. We have 78 comfortable and spacious rooms to offer, ranging from Standard Rooms, Deluxe Rooms, Penthouse Suite to Family Rooms.

**Treacy's Hotel, Enniscorthy, County Wexford, Ireland**

Tel: +353 (0)53 92 37798 Email: [info@treacyshotel.com](mailto:info@treacyshotel.com)

[www.treacyshotel.com](http://www.treacyshotel.com)

Ideally situated just 2 miles from Enniscorthy Golf Club, Treacys Hotel is one of the leading Wexford hotels offering luxury accommodation. Uniquely located in Enniscorthy Town. Just an hours drive from South Dublin, we are within easy access of Rosslare Europort. We are proud to welcome you into our newly designed bedrooms, thoughtfully decorated in rich tones. We offer 60 luxury bedrooms in exceptional comfort. With 3 different dining options on offer, you'll find that you're spoiled for choice at Treacy's Hotel. Whether it's traditional Irish dishes, continental European or exotic tastes of the Orient you desire, you'll find it here. D Bar Located in the heart of Enniscorthy is undoubtedly Wexford's most luxurious and stylish bar making it the perfect place for socialising with friends. Benedict's Nightclub has long been established as the South East's Premier entertainment venue. Free WIFI. Tea & Coffee Making Facilities.

**Ferrycarrig Hotel, Wexford, Ireland**

Tel: +353 (0)53 9120999 Email: [reservations@ferrycarrighotel.com](mailto:reservations@ferrycarrighotel.com)

[www.ferrycarrighotel.com](http://www.ferrycarrighotel.com)

The 4 Star Ferrycarrig Hotel in Wexford, boasts one of the most inspiring locations of any hotel in Wexford or Ireland, with sweeping views across the river Slaney. One of the finest Hotels in Wexford. The hotel is located one and a half hours from Dublin on the main N11. The Ferrycarrig Hotel in Wexford, is the perfect destination for that weekend or midweek break. The Ferrycarrig Hotel is one of Ireland's leading Family Friendly destinations We receive excellent comments from our previous guests, after experiencing Ferrycarrig on just one occasion, our guests like to return time and time again..... All of Ferrycarrig Hotel's 102 bedrooms overlook the River Slaney Estuary. The hotel consists of a variety of accommodation with four star standards to suit your personal requirements. Choose between standard, deluxe, junior suite and executive suite.

**Maldron Hotel Wexford, Ballindinas, Barntown, Wexford, Ireland**

Tel: +353 (0)53 917 2000 Email: [info.wexford@maldronhotels.com](mailto:info.wexford@maldronhotels.com)

[www.maldronhotels.com](http://www.maldronhotels.com)

Situated just five minutes from Wexford town, the Maldron Hotel and leisure centre Wexford introduces a contemporary hotel product to the area, featuring excellent facilities and service. Ideal for business or pleasure, this Wexford hotel has a popular Wexford restaurant, leisure centre, beauty salon and kids club all just minutes from Wexford town centre. View our Wexford hotel deals online! The sunny South East is renowned for mild temperatures, magnificent blue flag beaches and pretty harbour towns. Founded by the Vikings, Wexford town has retained character, with narrow streets and a long attractive quayside. The Maldron Hotel Wexford is ideally located close to Rosslare Harbour. Complimentary Wifi throughout the hotel. Complimentary use of Club Vitae Health & Fitness Club. Complimentary parking at Maldron Hotel Wexford.

**Whitford House Hotel New Line Road Wexford Ireland**

Tel: +353 (0)53 9143444 Email: [info@whitford.ie](mailto:info@whitford.ie)

[www.whitford.ie](http://www.whitford.ie)

Whitford House Hotel is regarded as one of the top 4 Star Hotels in Wexford. Known widely for combining old world charm with first class facilities, The Hotel is a unique family run property located just 3 miles from medieval Wexford town. With 50 years of experience in hospitality, this 4 Star hotel is renowned for luxury accommodation and fine locally sourced food. For the past 50 years, The Hotel has been welcoming guests from all over the world and catering to their every whim, whether they are here for business or pleasure. Wexford tradition doesn't go amiss either, as the Whitty family and hotel staff greet their guests as though they are welcoming friends. Each bedroom is beautifully furnished with comfortable beds, relaxing interiors and opulent touches. Some of the bedrooms boast views of the Wexford hotel's award-winning flower gardens while the superior rooms come with a private balcony or seating with a bay window.

**Enniscorthy Golf Club**

**Knockmarshall  
Enniscorthy  
Wexford  
Ireland**

Tel: +353 (0)53 92 33191

Email: [info@enniscorthygc.ie](mailto:info@enniscorthygc.ie)

Website: [www.enniscorthygc.ie](http://www.enniscorthygc.ie)

[www.hotelsneargolfcourses.ie](http://www.hotelsneargolfcourses.ie)

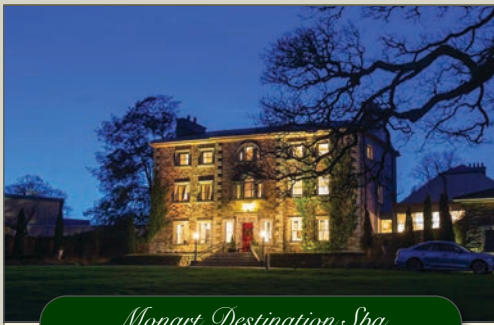


## Enniscorthy Golf Club

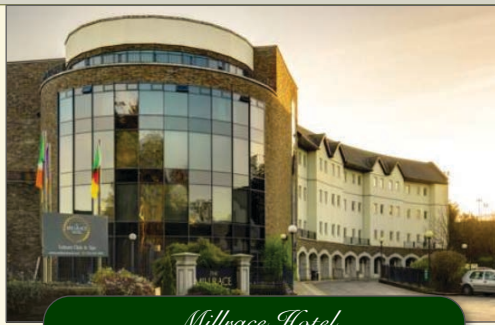


## Accommodation Guide

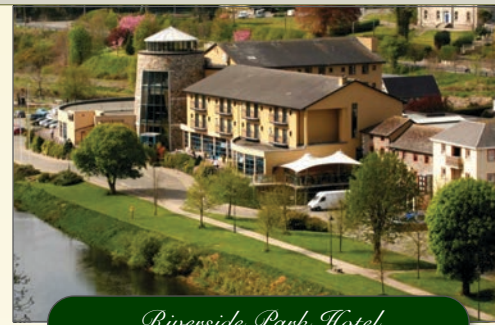




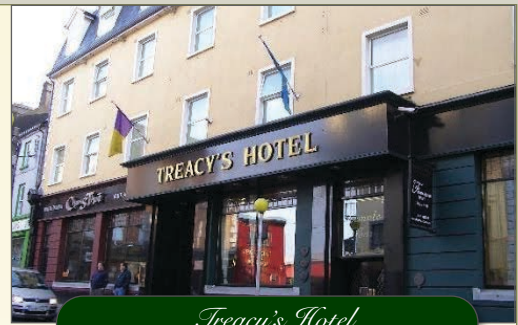
*Monart Destination Spa*



*Milrace Hotel*



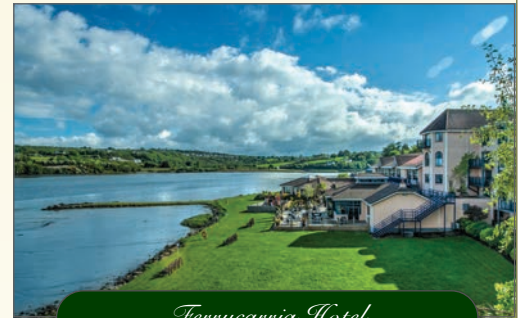
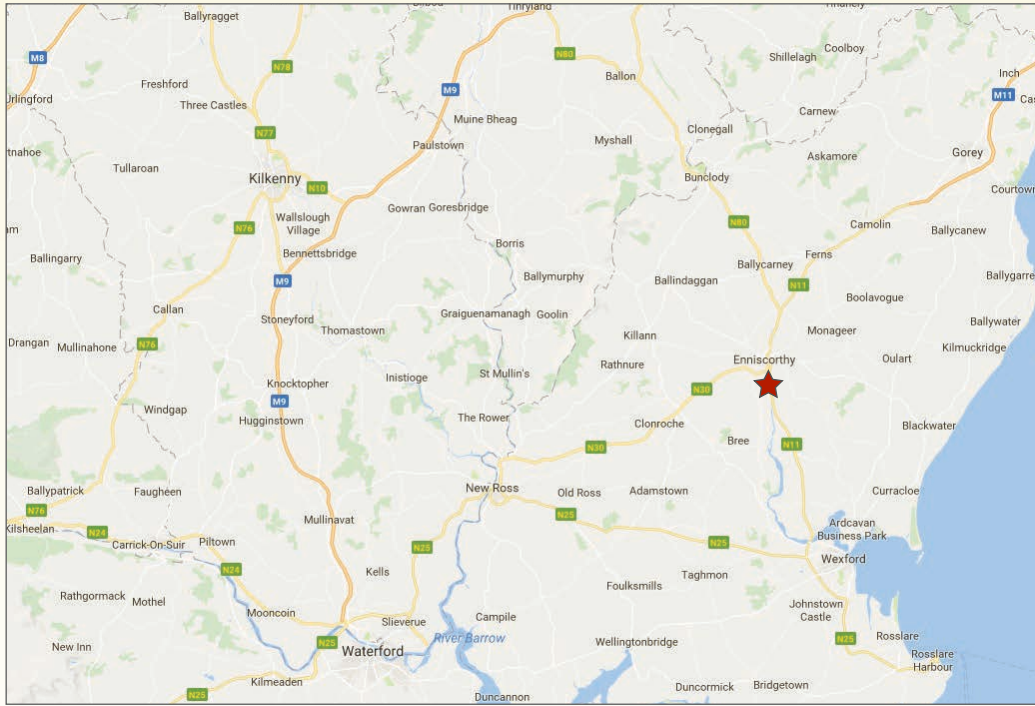
*Riverside Park Hotel*



*Treacy's Hotel*



*Whitford House Hotel*



*Ferrycarrig Hotel*



*Maldron Hotel*

